



Dimensions

Product dimensions (mm)	ø110/134 x 190
Packing dimensions (mm)	227 x 157 x 155
Net weight (g)	750
Gross weight (Kg)	0,940
Drilling hole (mm)	Ø104-118

Product

Real power (W)	31
Real luminous flux (Lm)	2000/2088/2220
Luminous efficiency (Lm/W)	71
Beam angle (°)	10°/25°/50°
Life time (h)	50000
IP	20
Electrical class insulation	Class 1
Operating temperature	from -20 °C to 35 °C
Electrical feeding	220..230V, 50/60Hz
Energy efficiency class	A

Control gear

Control gear included	Yes
Control gear	Electronic Control Gear
Factor de potencia	0,95
Harmonic distortion (%)	< 20

Light source

Light source included	Yes
Light source	Led
Nominal power (W)	31
Nominal luminous flux (Lm)	2800
Average life time (h)	50000
Colour temperature (K)	4000
Colour consistency (SDCM)	3
CRI	80

Options

Led engine
1225



11.1225.XXXX.XX

Adjustable circular Luminaire DOWNLIGHT from family BRIM by TROLL.

DESCRIPTION

Adjustable round downlight from the TROLL family Brim setting an advanced and innovative thermal balance system through passive dissipation with stable colour temperature of 4000° K (cold white) optimised to be used as general & accent lighting for commercial areas shop-windows and different indoor spaces. Designed for ceiling recessed installation. Luminaire body built in die-cast aluminium finished in white. Luminaire is IP20. Luminaire built-in a primary reflector made of high purity aluminium plus an antiglare secondary reflector. with an angle beam of 15°, 25° ó 50°. Luminaire sets a 31 W LED source with CRI higher than 85 % and a chromatic dispersion lower than 3 SMCD. Luminaire sets a ball joint system which allows rotation 355° and tilting 30°. Fixture has a luminous flux of 2000/2088/2220 Lm, with an efficiency of 71 Lm/W and a total consumption of 31 W. The average life for the luminaire is 50000 h (established at a minimum flux of 70 % from the original). Luminaire built-in an auxiliary gear ON/OFF at 220-240V; 50/60 Hz.

Item code	11.1225.XXXX.XX
Product type	IN
Category	Recessed Downlights
Family	Brim
Subfamily	Brim T2
Materials	Luminaire body built in die-cast aluminium.
Optical system	Luminaire built-in a primary reflector made of high purity aluminium plus an antiglare secondary reflector.
Installation instructions	Luminaire designed for ceiling recessed installation.

Pictograms



Reflectors

10 = 10°
25 = 25°
50 = 50°



11.■■■■■.■□□.□□

Secondary reflector

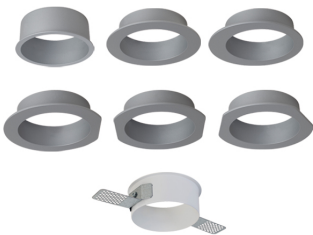
0 = Witout reflector
1 = Grey
2 = Golden
3 = White
4 = Black
7 = Bright aluminium



11.■■■■■.■■□□.□□

Trim

1.02 = Golden basic
1.04 = Black basic
1.21 = Grey basic
1.33 = White basic
2.33 = White trimless
3.02 = Golden symmetric
3.04 = Black symmetric
3.21 = Grey symmetric
3.33 = White symmetric
4.02 = Golden eccentric
4.04 = Black eccentric
4.21 = Grey eccentric
4.33 = White eccentric
5.02 = Golden Lateral
5.04 = Black lateral
5.21 = Grey lateral
5.33 = White lateral
6.02 = Golden parallel
6.04 = Black parallel
6.21 = Grey parallel
6.33 = White parallel
7.02 = Golden angular
7.04 = Black angular
7.21 = Black angular
7.33 = White angular



11.■■■■■.■■■■■.■■■

Accessories

11.1200.0001.00	Protection glass.
11.1200.0003.00	Anti glare honeycomb.