

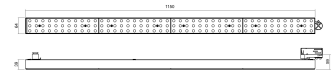


#### Dimensions

Product dimensions (mm)	64 x 1150 x 59
Packing dimensions (mm)	75 x 1195 x 115
Net weight (g)	2027
Gross weight (Kg)	2,5

#### Scheme

##### Scheme



#### Product

Real power (W)	41
Real luminous flux (Lm)	5728
Luminous efficiency (Lm/W)	139,8
Beam angle (°)	R-Wallwasher
Life time (h)	50000
IP	44
Electrical class insulation	Class 1
Operating temperature	from -25°C to 45°C
Electrical feeding	220..240V, 50/60Hz
Colour	Ceramic white
Energy efficiency class	A+

#### Control gear

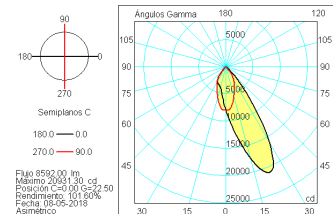
Control gear included	Yes
Control gear	Electronic Control Gear
Factor de potencia	0,95

#### Light source

Light source included	Yes
Light source	Led
Nominal power (W)	38,4
Nominal luminous flux (Lm)	6456
Average life time (h)	50000
Colour temperature (K)	4000
Current (mA)	300
Colour consistency (SDCM)	3
CRI	80

#### Photometry

##### Photometry



## Track mounted luminaire Box from the TROLL T-Tris system.

#### DESCRIPTION

Track mounted luminaire Box from the TROLL T-Tris system setting an advanced and innovative thermal balance system through passive dissipation with stable colour temperature of 4000° K (neutral white) optimised to be used as general lighting for commercial areas shop-windows and different indoor spaces. Designed for Installation on the TROLL triphasic track. Luminaire body made from stainless steel sheet finished in black. Luminaire is IP44. Luminaire built-in an independent lens system for each led with a wallwasher beam (right). Luminaire sets a 38,4 W LED source with CRI higher than 80 % and a chromatic dispersion lower than 3 SMD. Fixture has a luminous flux of 5728 Lm, with an efficiency of 139,8 Lm/W and a total consumption of 41 W. The average life for the luminaire is 50000 h (stabilised at a minimum flux of 70 % from the original). Luminaire built-in an auxiliary gear on/off fed at 220-240V; 50/60 Hz.

Item code	11.1670.3461.04
Product type	IN
Category	Tracklights
Family	T-Tris System
Subfamily	T-Tris Box
Materials	Luminaire body made from stainless steel sheet.
Optical system	Luminaire built-in a independent lens system for each led.
Installation instructions	Luminaire designed for Installation on the TROLL triphasic track.
Pictograms	