



2 m. length high efficiency adhesive flexible LED strip from the TROLL family Flexiled.

DESCRIPTION

2 m. length high efficiency adhesive flexible LED strip from the TROLL family Flexiled setting an advanced and innovative thermal balance system through passive dissipation with stable colour temperature of 3000° K (warm white) optimised to be used as indoor or outdoor lighting where environmental integration was a relevant requirement such as bathrooms, kitchen furniture, shelves or retro-illumination. Designed for wall or ceiling surface mounted. Luminaire built-in a silicone protection diffuser with an angle beam of 120°. Luminaire sets a 15 W LED source with CRI higher than 85 % and a chromatic dispersion lower than 3 SMCD. Fixture has a luminous flux of 1521 Lm, with an efficiency of 92,2 Lm/W and a total consumption of 16,5 W. The average life for the luminaire is 30000 h (stabilised at a minimum flux of 70 % from the original). Luminaire is fed at 220-240V; 50/60 Hz. and needs a constant power auxiliary gear.

Item code	11.7890.1583.02
Product type	IN
Category	Surface Linears
Family	Led Profile
Subfamily	Flexiled
Materials	Luminaire built in clear silicone UV protected.
Optical system	Luminaire built-in a silicone protection diffuser.
Installation instructions	Luminaire designed for wall or ceiling surface mounted.
Pictograms	

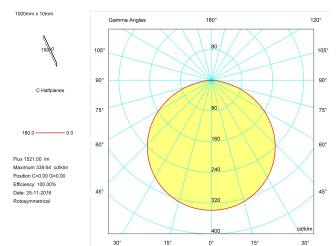
Dimensions	
Product dimensions (mm)	10 x 2000 x 2,5
Packing dimensions (mm)	150 x 200 x 4
Net weight (g)	90
Gross weight (Kg)	0,14

Product	
Real power (W)	16,5
Real luminous flux (Lm)	1521
Luminous efficiency (Lm/W)	92,2
Beam angle (°)	120
Life time (h)	30000
IP	20
Electrical class insulation	Class 3
Photobiological risk	0 - Exempt
Operating temperature	from -20°C to 35°C
Electrical feeding	24 VDC
Energy efficiency class	A+

Control gear	
Control gear	Electronic Control Gear

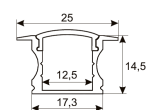
Light source	
Light source included	Yes
Light source	Led
Nominal power (W)	15
Nominal luminous flux (Lm)	1749
Colour temperature (K)	3000
Colour consistency (SDCM)	3
CRI	80

Photometry	
Photometry	



Accessories	
11.7890.0012.20	2 m length recessed profile set. Includes: Anodized aluminium profile (Alu6063-T5) + PC clear diffuser + Installation clips + End caps

Scheme



11.7890.0022.20 2 m length surface profile set. Includes: Anodized aluminium profile (Alu6063-T5) + PC clear diffuser + Installation clips + End caps.

Scheme



11.7890.0032.20

2 m length 45° surface profile set. Includes: Anodized aluminium profile (Alu6063-T5) + PC clear diffuser + Installation clips + End caps.

Scheme



11.7890.1012.20

2 m length recessed profile set. Includes: Anodized aluminium profile (Alu6063-T5) + PC opal diffuser + Installation clips + End caps

Scheme



11.7890.1022.20

2 m length surface profile set. Includes: Anodized aluminium profile (Alu6063-T5) + PC opal diffuser + Installation clips + End caps.

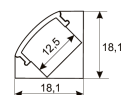
Scheme



11.7890.1032.20

2 m length 45° surface profile set. Includes: Anodized aluminium profile (Alu6063-T5) + PC opal diffuser + Installation clips + End caps.

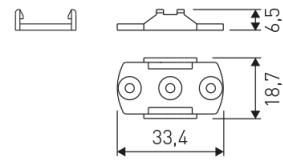
Scheme



478/33

Upper fastening staples. (1 unit)

Scheme



478/C200/00

Transparent cover.

Scheme



478/P200/21

Aluminium profile.

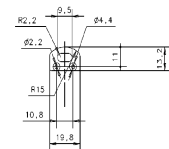
Scheme



478/T/21

Profile covers. (2 units)

Scheme



48/04

With terminals up to 4 mm² section. To join 5 mm² silicone cable to 13 mm².

Picture



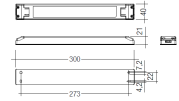
71/LD10024

96W Power supply driver from the Troll family Standard DriverP.

Picture



Scheme



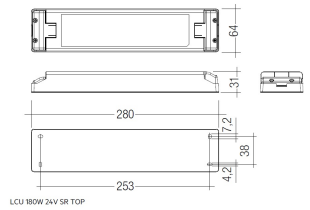
71/LD18024

180W Power supply driver from the Troll family Standard DriverP

Picture



Scheme



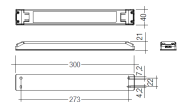
71/LD3524

35W Power supply driver from the Troll family Standard DriverP.

Picture



Scheme



71/LD6024

60W Power supply driver from the Troll family Standard DriverP.

Picture



Scheme



73/DLP

Light dimming controller 12-24V. On/Off
Push, Dali, 0-10V, 1-10V. (Master)

Picture



73/DLS

Light dimming controller 12-24V. On/Off
Push, Dali, 0-10V, 1-10V. (Slave)

Picture

