




---

**Dimensions**


---

Product dimensions (mm)	260 x 650 x 130
Packing dimensions (mm)	310 x 705 x 155
Net weight (g)	10500
Gross weight (Kg)	11

---



---

**Scheme**

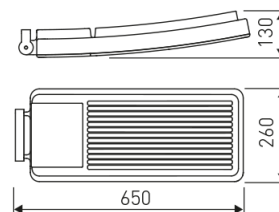

---



---

**Scheme**


---




---

**luminaire from the TROLL family Wind.**


---



---

**DESCRIPTION**


---

luminaire from the TROLL family Wind setting an advanced and innovative thermal balance system through passive dissipation with stable colour temperature of 4000° K (neutral white) optimised to be used as lighting outdoor areas such as public squares, parks, gardens or outdoor areas of sport buildings. Designed for pole installed or wall mounted. Luminaire body built in die-cast aluminium finished in anthracite. Luminaire is IP66and IK07. Luminaire built-in an independent lens system for each led with an angle beam of 130° x 45°. Luminaire sets a 110 W LED source with CRI higher than 65 % and a chromatic dispersion lower than 3 SMCD. Fixture has a luminous flux of 7272 Lm, with an efficiency of 66,1 Lm/W and a total consumption of 110 W. The average life for the luminaire is 50000 h (stabilised at a minimum flux of 70 % from the original). Luminaire built-in an auxiliary gear ON/OFF fed at 220-240V; 50/60 Hz.

Item code	7150N/100/222
Product type	OUT
Category	Poles
Family	Wind
Subfamily	Wind
Materials	Luminaire body built in die-cast aluminium.
Optical system	Luminaire built-in an independent lens system for each led.
Installation instructions	Luminaire designed for pole installed or wall mounted.

---

**Product**


---

Real power (W)	110
Real luminous flux (Lm)	7272
Luminous efficiency (Lm/W)	66,1
Beam angle (°)	130 x 45
Life time (h)	50000
IP	66
IK	7
Electrical class insulation	Class 1
Operating temperature	from -20° C to 35° C
Electrical feeding	220..240V, 50/60Hz
Colour	Anthracite
Energy efficiency class	A

---



---

**Control gear**


---

Control gear included	Yes
Control gear	Electronic Control Gear
Factor de potencia	0,9

---



---

**Light source**


---

Light source included	Yes
Light source	Led
Nominal power (W)	100
Nominal luminous flux (Lm)	8365
Colour temperature (K)	4000
Colour consistency (SDCM)	3
CRI	70

---

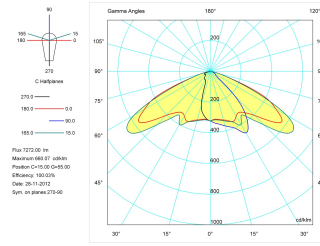


---

**Photometry**


---

Photometry



Accessories

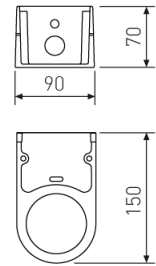
15/7150/222

End pole (to replace luminaires in poles of Ø60 mm)

Picture



Scheme



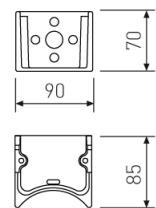
15/7151/222

End / Medium pole. (For pole 17/...)

Picture



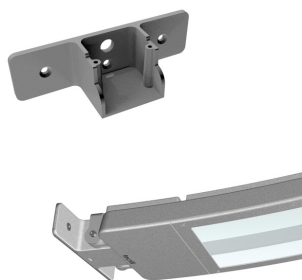
Scheme



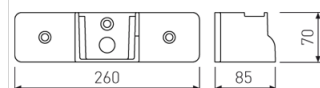
15/7152/222

Wall-mounted version.

Picture



Scheme



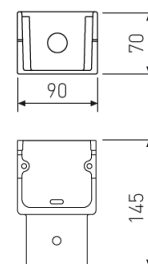
15/7153/222

End pole (to replace luminaries in poles)

Picture



Scheme



17/7154/222	h=4m 0 90
17/7154/87	h=4m 0 90
17/7156/222	h=6m 0 102
17/7156/87	h=6m 0 102
17/7158/222	h=8m 0 102
17/7158/87	h=8m 0 102